



Albacore Canadian National Championships September 15 - 17, 2023

ORGANIZING AUTHORITY: CANADIAN
ALBACORE ASSOCIATION

In cooperation with the Thornbury Yacht Club
Official Website: <https://albacore.ca>

SUPPLEMENT to the STANDARD SAILING INSTRUCTIONS (SSI) (Numbering corresponds to the RRS Appendix S)

4 SIGNALS MADE ASHORE

- 4.2 Signals made ashore will be displayed on the flagpole located in front of the Thornbury Harbour Office.
- 4.3 When flag AP is displayed ashore, '1 minute' is replaced with 'not less than 30 minutes' in Race Signals AP.

5 SCHEDULE OF RACES

- 5.3 The schedule of races is as follows.

Date	Maximum # of races / day	
September 15, 2023	4	First signal at 12:00 pm
September 16, 2023	4	First signal at 11:00 am
September 17, 2023	2	First signal at 10:00 am

- 5.4 The Race Committee may sail one additional race per day, but shall not get more than one race ahead in the series.
- 5.5 On the last scheduled day of racing no warning signal will be made after 2pm.

6. CLASS FLAGS

- 6.1 The class flag for the Championship fleet will be the Albacore insignia on a white background.
- 6.2 The class flag for the Challenger fleet will be numeral pennant 1.

7 THE COURSES

- 7.3 Only the courses shown in SSI Addendum A - Racing Areas and Courses, will be used for the event.

7.5 Where there is a gate, if one of the gate marks is missing, the remaining gate mark will be left to port.

8 MARKS

8.2 Marks 1, 2S and 2P will be orange inflatables.

8.3 Mark 1a will be a red ball.

8.4 The starting mark will be a green inflatable.

8.5 The finishing mark will be a red inflatable.

8.6 New mark, as provided in SI 10, will be a yellow inflatable.

9 THE START

9.3 A boat that does not start within 5 minutes after her starting signal will be scored Did Not Start without a hearing. This changes RRS A5.1 and A5.2.

10 CHANGE OF THE NEXT LEG OF THE COURSE

10.2 The race committee may, without signal, move a mark to change the direction up to 10 degrees or the length up to 10% of the previous length, provided that no boat is sailing to the mark. This changes RRS 33.

10.3 In the event of the next leg change of course, Mark 1a will not be relocated. Boats shall round the new Mark, leaving it to port.

11 THE FINISH

11.2 If the Race Committee determines that the finishing order in a race is unlikely to change, it may use reasonable discretion to score boats still racing, points equal to their position in the race. This changes RRS A3, A4 and A5.2.

12 TIME LIMITS [AND TARGET TIMES]

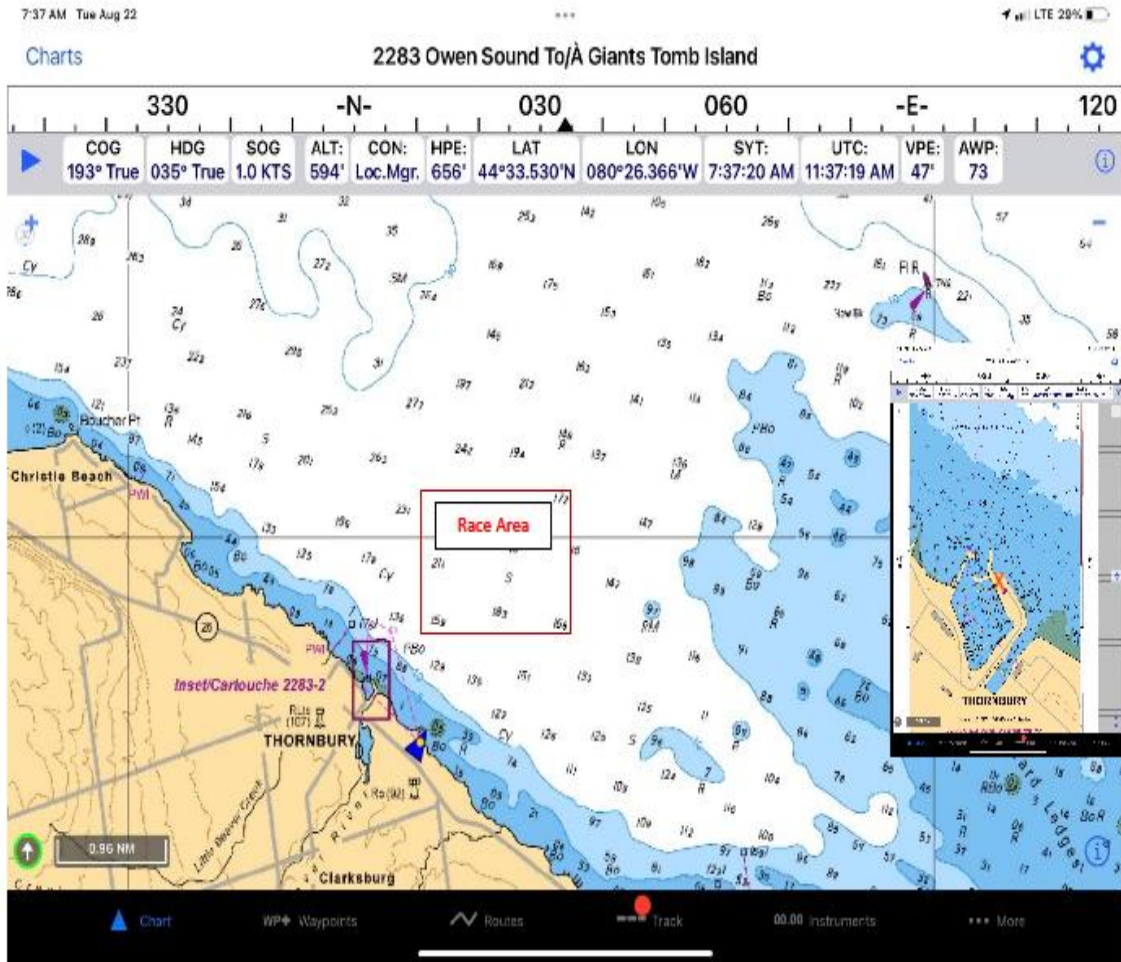
12.4 The Mark 1 Time Limit, Race Time Limit and the Finishing Window are shown in the table below. These apply for both the Championship and Challenger fleet.

Mark 1 Time Limit	Race Time Limit	Finishing Window
<i>30 minutes</i>	<i>90 minutes</i>	<i>30 minutes</i>

13 PROTESTS AND REQUESTS FOR REDRESS

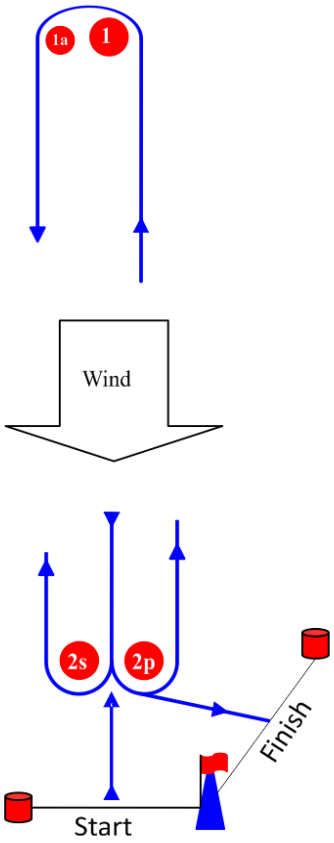
13.5 Appendix T will apply. The arbitrator may be included as part of the protest committee.

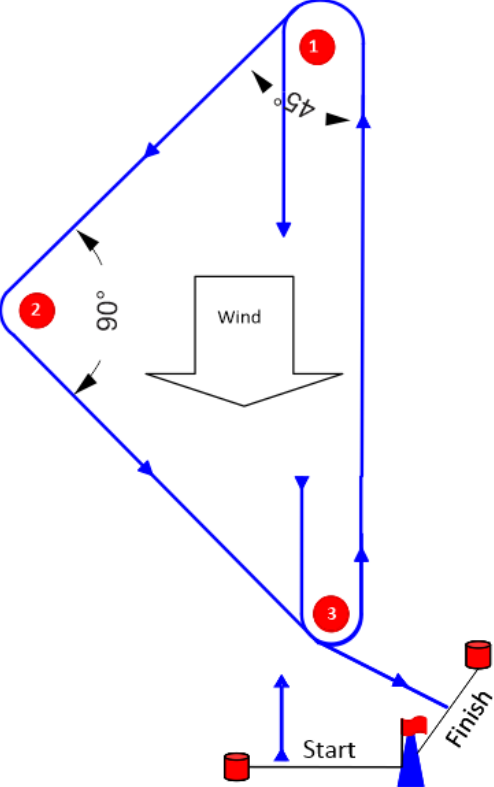
SSI ADDENDUM A – RACING AREA



X- Race Office and Launch Ramp

SSI ADDENDUM A - COURSES

Course	Description		
	Windward/Leeward offset mark 1a with Hollywood finish at the signal boat		
	Possible courses		
	Signal	Mark Rounding Order	
	LA1	Start-1-1a-2p-Finish	
	LA2	Start-1-1a -2s/2p-1-1a -2p-Finish	
LA3	Start-1-1a -2s/2p-1-1a -2s/2p-1-1a -2p-Finish		

Course	Description	
	Triangle Windward Leeward	
	Possible courses	
	Signal	Mark Rounding Order
	L2	Start-1-3-1-3-Finish
	L3	Start-1-3-1-3-1-3-Finish
	T2	Start-1-2-3-1-2-3-Finish
TL2	Start-1-2-3-1-3-Finish	

And thanks to our sponsors!



SALUS



THORNBURY

CRAFT CO.